

**SCHEDULE OF COLUMNS**

COLUMN MKD.	SIZE	FOUNDATION TO 1ST. FL.	1ST. FLOOR TO 3RD. FL.	3RD. FLOOR TO 5TH FL.	5TH FLOOR TO ROOF
C1,C2,C13,C16	300 X 450	4-16T+	4-16T+	4-16T+	4-16T+
C20,C21,C22,C28	300 X 450	4-16T+	4-12T	4-12T	4-16T+
C3	300 X 450	4-16T+	4-16T+	4-16T+	4-16T+
C27	300 X 450	4-20T+	4-16T+	4-16T+	4-16T+
C18	250 X 500	4-16T+	4-12T	4-12T	4-16T+
C7	300 X 550	4-16T+	4-16T+	4-16T+	4-16T+
C8,C12,C23,C25	300 X 500	4-16T+	4-12T	4-12T	4-16T+
C9,C14,C24	300 X 500	4-16T+	4-12T	4-12T	4-16T+
C13,C19	300 X 500	4-16T+	4-12T	4-12T	4-16T+
C17	300 X 500	4-16T+	4-12T	4-12T	4-16T+
C6,C11	250 X 700	4-16T+	4-16T+	4-16T+	4-16T+
SC	250 X 300	4-16T+2-12T (FROM THE BEAM TO HALF LANDING & FLOOR TO HALF LANDING LEVEL)	4-16T+	4-16T+	4-16T+

**SCHEDULE OF BEAMS**

BEAM MKD.	SIZE	AT SUPPORT	AT SPAN	STRUUPS
B1	250 X 450	2-16TOR+2-16TOR	2-16TOR	2-16TOR@1750C
B2	250 X 450	2-16TOR+2-16TOR	2-16TOR	2-16TOR@1750C
B3	250 X 450	3-16TOR+2-16TOR	3-16TOR	2-16TOR@1750C
B4	250 X 450	3-16TOR+2-16TOR	3-16TOR	2-16TOR@1750C
B5	250 X 500	3-16TOR+2-16TOR	3-16TOR	2-16TOR@1750C
B6	250 X 500	3-16TOR+2-16TOR	3-16TOR	2-16TOR@1750C
B7	250 X 500	3-16TOR+2-16TOR	3-16TOR	2-16TOR@1750C
B8	250 X 500	3-16TOR+2-16TOR	3-16TOR	2-16TOR@1750C
B8	250 X 500	3-16TOR+2-16TOR	3-16TOR	2-16TOR@1000C
CB	250 X 500	3-16TOR+2-16TOR	3-16TOR	2-16TOR@1000C
SB	250 X 450	2-16TOR	2-16TOR	2-16TOR@1750C
SB1	250 X 450	2-16TOR	2-16TOR	2-16TOR@1750C
HLB	250 X 450	3-20TOR	3-20TOR	2-16TOR@1750C

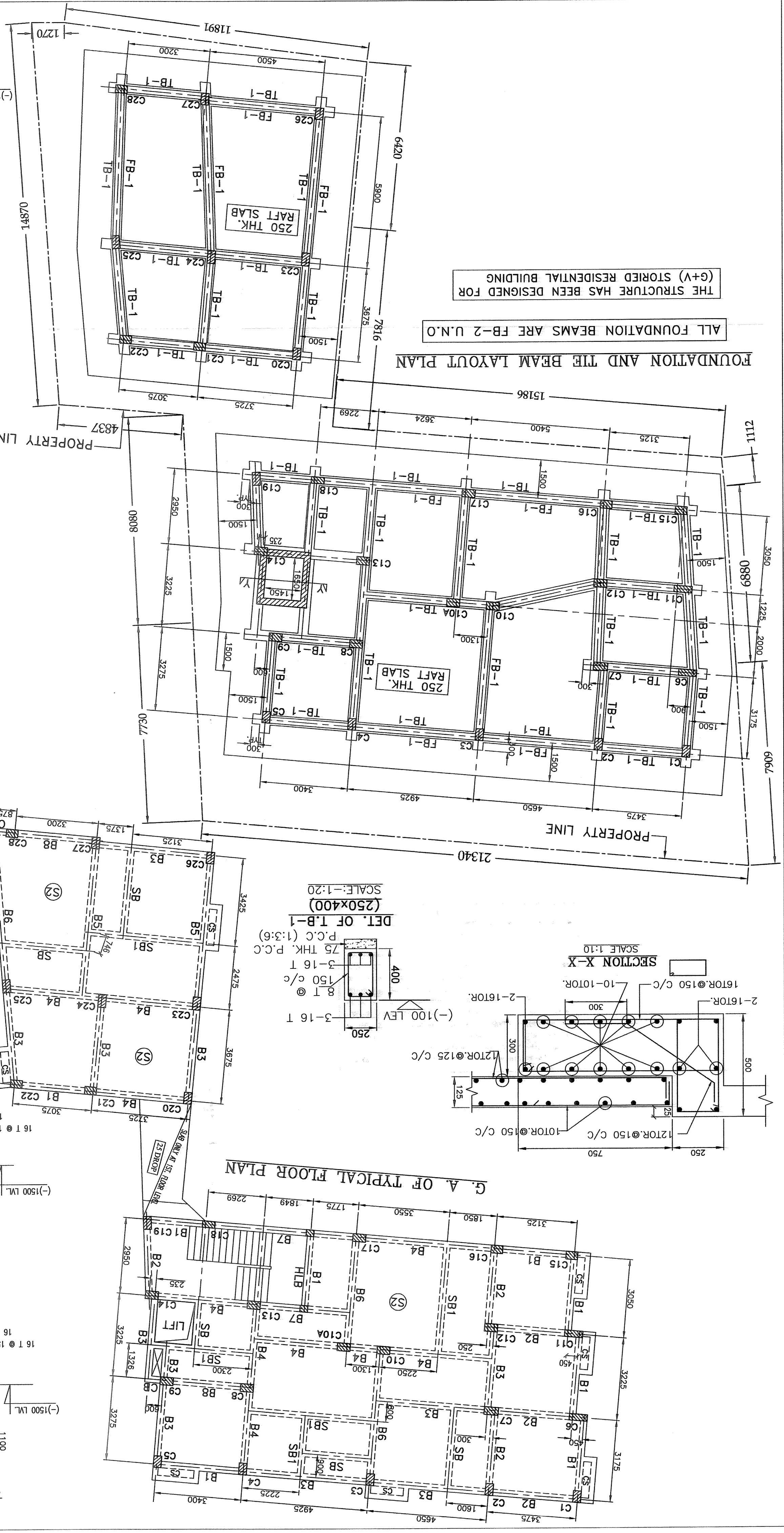
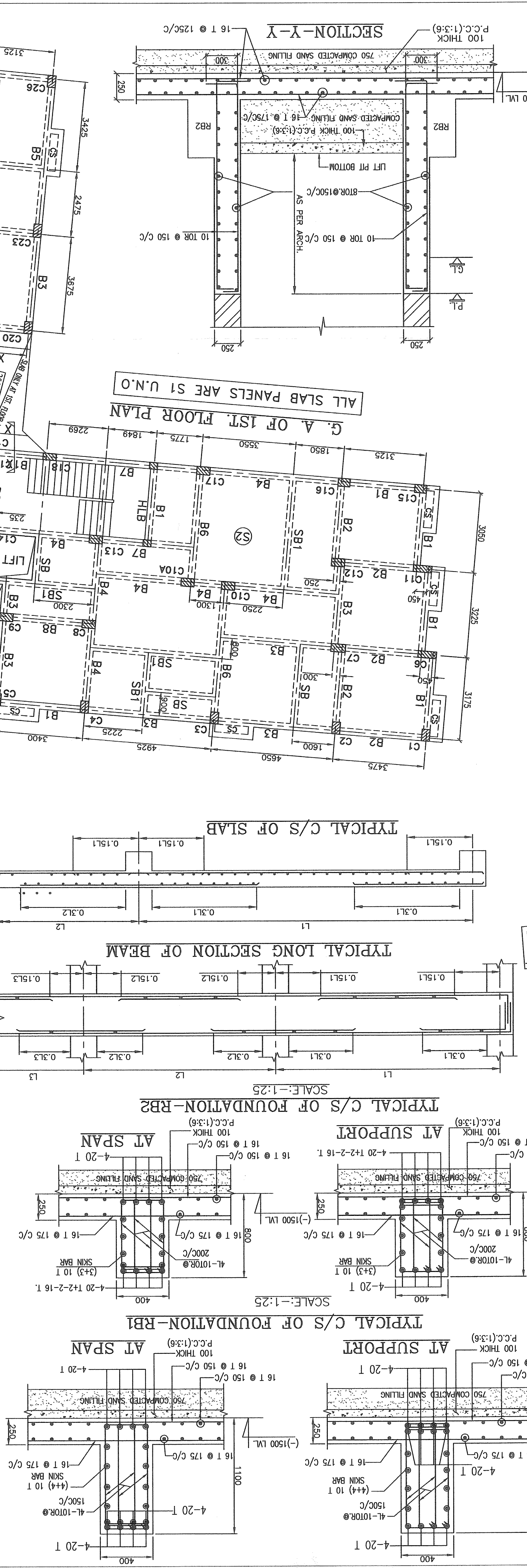
**SCHEDULE OF SLABS**

PANEL	THICKNESS (mm)	TOP OVER SUPPORT	BOTTOM AT SPAN	TOP OVER SPAN	BOTTOM AT SUPPORT	LONGER BARS
S1	100	8TOR@1750C	8TOR@1750C	8TOR@1750C	8TOR@2000C	8TOR@2000C
S2	110	8TOR@1500C	8TOR@1750C	8TOR@1750C	8TOR@1750C	8TOR@1750C
CS	125	10TOR@1250C	8TOR@2000C	8TOR@2000C	8TOR@2000C	8TOR@2000C

**SCHEDULE OF SLABS**

PANEL	THICKNESS (mm)	TOP OVER SUPPORT	BOTTOM AT SPAN	TOP OVER SPAN	BOTTOM AT SUPPORT	LONGER BARS
S1	100	8TOR@1750C	8TOR@1750C	8TOR@1750C	8TOR@2000C	8TOR@2000C
S2	110	8TOR@1500C	8TOR@1750C	8TOR@1750C	8TOR@1750C	8TOR@1750C
CS	125	10TOR@1250C	8TOR@2000C	8TOR@2000C	8TOR@2000C	8TOR@2000C

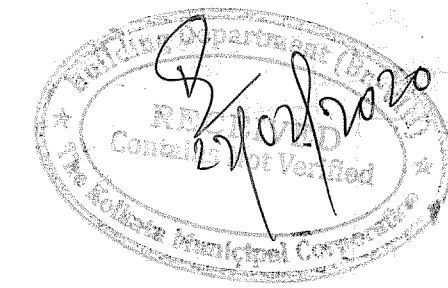
**PROVIDE DISTRIBUTION 8TOR @ 200 C/C WHERE NECESSARY**



PARTY'S COPY

Structural plan and design calculation as submitted by the structural engineer have been kept with P.P. No. 2019083027. Date 21/02/2020. Record of the Kolkata Municipal Corporation without verification No. deviation from the submitted structural plan should be made at the time of erection without submitting fresh structural plan along with design calculation and stability certificate in the prescribed form, necessary steps should be taken for the safety of the adjoining premises public and private properties and safety of human life during construction.

*[Signature]*  
 EXECUTIVE ENGINEER/ASST. ENGINEER  
 BOROUGH NO. 2/11



10/11/2019  
 10/11/2019  
 10/11/2019

10/11/2019  
 10/11/2019  
 10/11/2019

For Wastec Promoters Pvt Ltd  
 10/11/2019

Director (AB CONSTRUCTION)